

# B. Photo Readiness Report

Generated: 2026-02-13T11:41:16Z

## 248.0

/ 300 total

Agency-ready

Confidence: 99 (High)

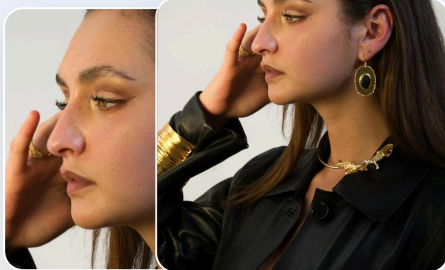
Pose Variety: 66.7 / 100

Lighting: 100 / 100

Cohesion: 45 / 100

Fashion Fit: 84 / 100

Palette: 54 / 100



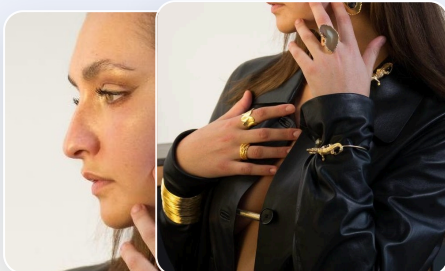
Look 1

Beauty | Score 84.9



Look 2

Beauty | Score 82.8



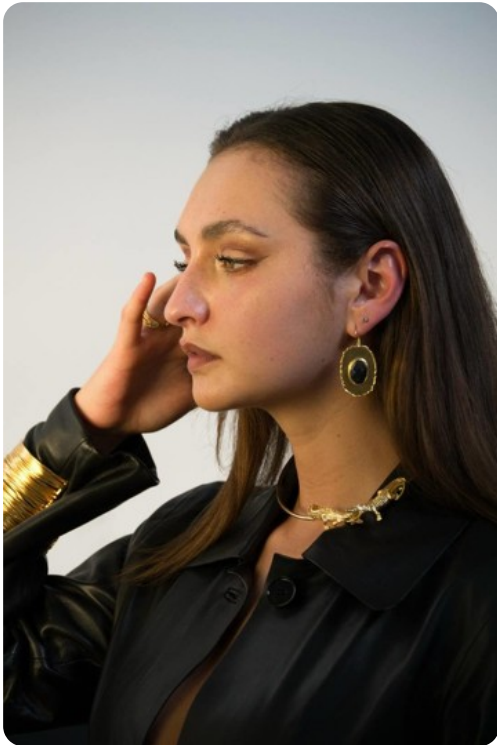
Look 3

Beauty | Score 80.2

## Scouting Agent Report

This series reads like a quiet fashion narrative, The set plays as a confident casting story, There is a clean, modern arc running through these frames, with a e-commerce-leaning sensibility and styling restraint that keeps the focus on silhouette and expression, moving from a composed first impression into a more assured, camera-aware presence. The story threads through the set as follows: This three-quarter frame reads clean and sellable, with product and body shape staying clear in frame, then A three-quarter view keeps a practical commercial feel, where fit and proportion remain easy to evaluate, then The camera finds a three-quarter angle that presents a straightforward market-ready read with clear silhouette separation, then In this three-quarter composition reads clean and sellable, with product and body shape staying clear in frame, then This full body portrait keeps a practical commercial feel, where fit and proportion remain easy to evaluate. The collection feels bookable and cohesive, with just enough range to keep a casting director engaged.

## All Photos



Score 84.9

Confidence 100 (High)



Score 82.8

Confidence 100 (High)

Fashion fit 84.9 / 100

Subject coverage 69.6%

Posture 76.8 / 100

Limb cutoffs 0 point(s)

Grooming 97.1 / 100

Shine control 100.0 / 100

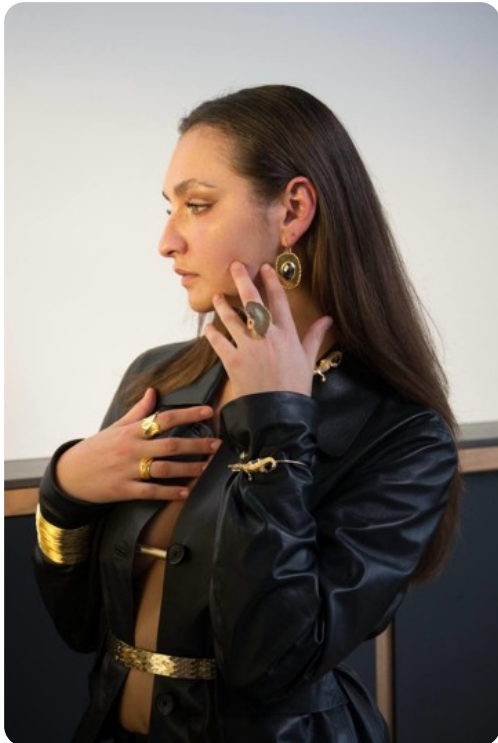
Wardrobe/background separation 100.0 / 100

Good candidate for your top selection.

Style Beauty (0.80) | Fashion (0.70)

In this three-quarter composition reads clean and sellable, with product and body shape staying clear in frame. Light falls cleanly across the face, keeping skin tone luminous without flattening structure. There is a composed, camera-aware presence that feels bookable and on-brief. Against the previous frame, this one appears consistent and improves catalog consistency.

Nudity 29.9%



Score 80.2

Confidence 99 (High)

Fashion fit 89.2 / 100

Subject coverage 53.1%

Posture 74.3 / 100

Limb cutoffs 0 point(s)

Fashion fit 78.5 / 100

Subject coverage 59.4%

Posture 60.8 / 100

Limb cutoffs 0 point(s)

Grooming 94.3 / 100

Shine control 100.0 / 100

Wardrobe/background separation 0.0 / 100

Good candidate for your top selection.

Style Beauty (0.80) | Fashion (0.70)

The camera finds a three-quarter angle that presents a straightforward market-ready read with clear silhouette separation. Light falls cleanly across the face, keeping skin tone luminous without flattening structure. There is a composed, camera-aware presence that feels bookable and on-brief. It helps maintain set consistency by maintaining the same visual cadence.

Nudity 37.7%



Score 79.0

Confidence 100 (High)

Fashion fit 97.0 / 100

Subject coverage 39.7%

Posture 88.1 / 100

Limb cutoffs 0 point(s)

Grooming 90.4 / 100

Shine control 80.8 / 100

Wardrobe/background separation 100.0 / 100

Good candidate for your top selection.

Style Beauty (0.80) | Fashion (0.70)

This three-quarter frame reads clean and sellable, with product and body shape staying clear in frame. Light falls cleanly across the face, keeping skin tone luminous without flattening structure. There is a composed, camera-aware presence that feels bookable and on-brief. Against the previous frame, this one appears as the opening statement and improves catalog consistency.

Nudity 30.5%

Grooming 82.2 / 100

Shine control 100.0 / 100

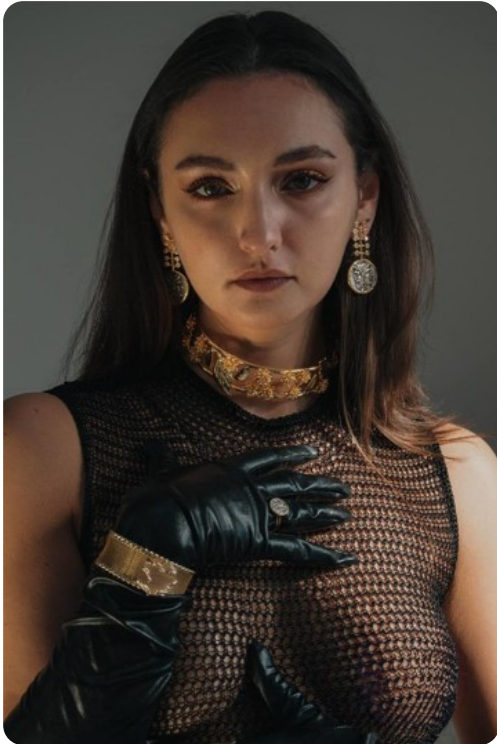
Wardrobe/background separation 100.0 / 100

Good clarity; the image reads clean and usable. Keep this consistency for a reliable, bookable set.

Style Fashion (0.80) | Beauty (0.70)

A three-quarter view keeps a practical commercial feel, where fit and proportion remain easy to evaluate. Light falls cleanly across the face, keeping skin tone luminous without flattening structure. There is a composed, camera-aware presence that feels bookable and on-brief. It supports the set by maintaining the same visual cadence, keeping output reliable for client review.

Nudity 18.2%



Score 69.3

Confidence 95 (High)

Fashion fit 72.1 / 100

Subject coverage 74.6%

Posture 97.0 / 100

Limb cutoffs 1 point(s)

Grooming 92.9 / 100

Shine control 100.0 / 100

Wardrobe/background separation 89.6 / 100

Great clarity and focus—detail reads crisp and professional. Lift exposure slightly to open the shadows and keep facial detail clean.

Style Sensual (0.70) | Beauty (0.60)

This full body portrait keeps a practical commercial feel, where fit and proportion remain easy to evaluate. Light falls cleanly across the face, keeping skin tone luminous without flattening structure. There is a composed, camera-aware presence that feels bookable and on-brief. It supports the set by softening the energy after the previous image, keeping output reliable for client review.

Nudity 38.9%

# Score Breakdown

Sharpness



92.5 / 100

Exposure



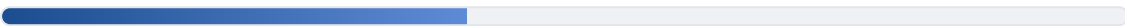
75.0 / 100

Contrast



90.3 / 100

Framing



41.3 / 100

Background



100.0 / 100

Fashion Fit



84.3 / 100

Grooming



91.4 / 100

## Wardrobe Separation



77.9 / 100

## Pose Variety

Score: 66.7 / 100

Missing types: headshot

## Fashion Fit & Posture

Fashion fit score: 84 / 100

Posture score: 79 / 100

Average subject coverage: 59.3%

Images with limb cutoff risk: 1

## Styling & Grooming

Grooming score: 91 / 100

Hair/face occlusion control: 86 / 100

Face shine control: 96 / 100

Wardrobe/background separation: 77 / 100

## Face & Expression

Eye openness score: 100 / 100

Expression balance: 0 / 100

Face angle stability: 43 / 100

## Category Fit

Ecommerce (Best Fit)



79.1 / 100

Editorial

78.1 / 100

Beauty

74.3 / 100

Commercial

74.0 / 100

## Lighting & Cohesion

Lighting quality: 100 / 100

Background edge density: 0.7%

Palette consistency: 54 / 100

Hue variance: 29.2 deg

Temperature variance: 0.068

Cohesion score: 45 / 100

Lighting, background, or palette varies across the set.

Dominant style: Beauty

## Coach Feedback

- Center the subject and keep consistent headroom.
- Keep wrists and ankles fully inside the frame to protect silhouette continuity.
- Keep palette and white balance more consistent across the set for stronger cohesion.
- Standardize lighting angle and background distance to improve set cohesion.
- Rework framing to support the intended category brief and keep visual balance.

Next step: Keep wrists and ankles fully inside the frame to protect silhouette continuity.

AI source: fallback

## What to Keep

- Keep lighting soft and even across the face.
- Maintain simple styling and clean backgrounds.

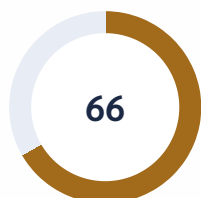
- Keep expression natural and camera-aware.

## Reshoot Checklist

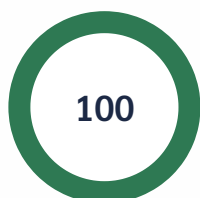
- Keep consistent headroom and avoid cutting off hands or feet
- Avoid oversized outfits; choose clean, form-fitting basics
- Use natural makeup with matte finishes to reduce shine
- Avoid direct overhead light; keep the light source in front of you
- Remove clutter and strong patterns from the background

## How To Read Your Metrics

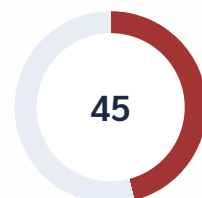
Use this dashboard as your decision map: high values show what is production-ready, while lower values show what to improve first. Start with the three lowest metrics and retest after your next shoot set.



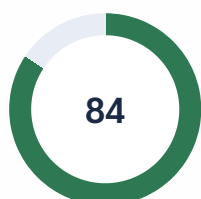
Pose Variety  
**Moderate**  
66 / 100



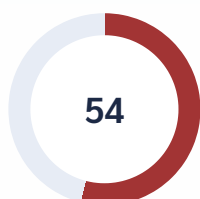
Lighting  
**Strong**  
100 / 100



Cohesion  
**Priority**  
45 / 100



Fashion Fit  
**Strong**  
84 / 100



Palette  
**Priority**  
54 / 100

Pose Variety



66 / 100

Lighting



100 / 100

Cohesion	<div><div></div></div>	45 / 100
Fashion Fit	<div><div></div></div>	84 / 100
Palette	<div><div></div></div>	54 / 100

### Priority Order For Next Shoot

- Cohesion: 45 / 100
- Palette: 54 / 100
- Pose Variety: 66 / 100

### Pose Variety

**What it means:** Measures range of framing types and visual variation across the set.

**How to improve:** Add headshot, three-quarter, and full-body with clearly different body lines.

### Lighting

**What it means:** Measures highlight/shadow balance and face readability.

**How to improve:** Use soft front-side light and keep exposure consistent across frames.

### Cohesion

**What it means:** Measures how consistent your set feels in light, background, and color.

**How to improve:** Keep location, white balance, and setup similar when shooting the sequence.

### Fashion Fit

**What it means:** Measures silhouette strength, posture quality, and framing of body lines.

**How to improve:** Lengthen posture, keep line clean, and avoid cramped composition.

### Palette

**What it means:** Measures color harmony and tone consistency across photos.

**How to improve:** Use coordinated wardrobe tones and stable color temperature.

Automated audit only. No guarantee of selection.