

# B. Photo Readiness Report

Generated: 2026-02-12T23:38:05Z

## 210.0

/ 300 total

Needs improvements

Confidence: 91 (High)

Pose Variety: 66.7 / 100

Lighting: 95 / 100

Cohesion: 23 / 100

Fashion Fit: 79 / 100

Palette: 13 / 100



Look 1

Fashion | Score 82.7



Look 2

Beauty | Score 65.2



Look 3

Sensual | Score 62.1

## Scouting Agent Report

This series reads like a quiet fashion narrative, The set plays as a confident casting story, There is a clean, modern arc running through these frames, with a editorial-leaning sensibility and styling restraint that keeps the focus on silhouette and expression, where the mood deepens as the sequence unfolds and the line becomes more intentional. The story threads through the set as follows: This three-quarter frame introduces a editorial mood with clean lines and a modern casting feel, then A three-quarter view leans into a developmental attitude, with shape and proportion reading clearly, then The camera finds a three-quarter angle that carries a developmental polish with a deliberate silhouette and camera-aware energy, then In this three-quarter composition introduces a developmental mood with clean lines and a modern casting feel, then This headshot portrait leans into a developmental attitude, with shape and proportion reading clearly. Overall, it suggests a model who can deliver a brief with polish while still leaving room for refinement in precision and finish.

## All Photos



Score 82.7

Confidence 100 (High)

Fashion fit 93.6 / 100



Score 65.2

Confidence 89 (High)

Subject coverage 32.4%

Posture 74.3 / 100

Limb cutoffs 0 point(s)

Grooming 84.4 / 100

Shine control 100.0 / 100

Wardrobe/background separation 100.0 / 100

Good candidate for your top selection.

Style Fashion (0.85) | Beauty (0.75)

This three-quarter frame introduces a editorial mood with clean lines and a modern casting feel. Light falls cleanly across the face, keeping skin tone luminous without flattening structure. There is a composed, camera-aware presence that feels bookable and on-brief. Compared with the previous frame, this one reads as the opening statement and sharpens the narrative of the set.

Nudity 12.9%

Fashion fit 92.4 / 100

Subject coverage 65.1%

Posture 79.3 / 100

Limb cutoffs 0 point(s)

Grooming 100.0 / 100

Shine control 100.0 / 100

Wardrobe/background separation 100.0 / 100

Good candidate for your top selection.

Style Beauty (0.80) | Fashion (0.70)

A three-quarter view leans into a developmental attitude, with shape and proportion reading clearly. Light falls cleanly across the face, keeping skin tone luminous without flattening structure. There is a composed, camera-aware presence that feels bookable and on-brief. It connects to the sequence by softening the energy after the previous image, adding dimension to the overall story.

Nudity 27.3%



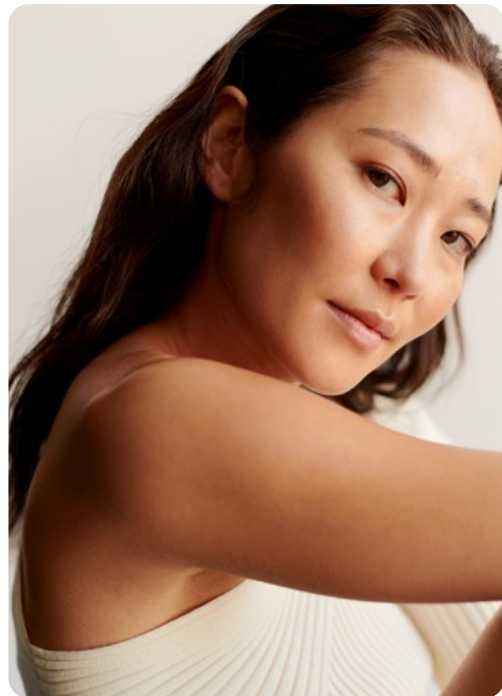
Score 62.1

Confidence 92 (High)

Fashion fit 93.8 / 100

Subject coverage 22.4%

Posture 75.0 / 100



Score 58.8

Confidence 92 (High)

Fashion fit 40.7 / 100

Subject coverage 83.2%

Posture 0.0 / 100

Limb cutoffs 1 point(s)

Limb cutoffs 0 point(s)

Grooming 78.7 / 100

Shine control 100.0 / 100

Wardrobe/background separation 0.0 / 100

Good candidate for your top selection.

Style Sensual (0.85)

The camera finds a three-quarter angle that carries a developmental polish with a deliberate silhouette and camera-aware energy. Light reads soft but could be refined to sculpt the face with more precision and clarity. There is a composed, camera-aware presence that feels bookable and on-brief. It complements the surrounding frames by maintaining the same visual cadence, keeping the set cohesive.

Nudity 80.8%

Grooming 67.8 / 100

Shine control 48.0 / 100

Wardrobe/background separation 100.0 / 100

Background stays clean, keeping attention on the face and line. Sharpness drops—use steadier support and lock focus on the eyes.

Style Beauty (0.80) | Sensual (0.60)

This headshot portrait leans into a developmental attitude, with shape and proportion reading clearly. Light falls cleanly across the face, keeping skin tone luminous without flattening structure. There is a composed, camera-aware presence that feels bookable and on-brief. It connects to the sequence by maintaining the same visual cadence, adding dimension to the overall story.

Nudity 69.9%



Score 55.0

Confidence 83 (High)

Fashion fit 79.4 / 100

Subject coverage 26.1%

Posture 19.0 / 100

Limb cutoffs 0 point(s)

Grooming 77.6 / 100

Shine control 56.3 / 100

Wardrobe/background separation 94.4 / 100

Good clarity; the image reads clean and usable. Pull back highlights to avoid blown skin texture and regain tonal detail.

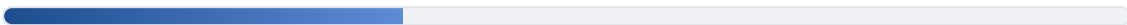
Style Ecommerce (0.85) | Fashion (0.75)

In this three-quarter composition introduces a developmental mood with clean lines and a modern casting feel. Light falls cleanly across the face, keeping skin tone luminous without flattening structure. The presence is promising, though a steadier gaze and posture would elevate the frame. Compared with the previous frame, this one reads more relaxed and sharpens the narrative of the set.

Nudity 38.1%

# Score Breakdown

Sharpness



35.4 / 100

Exposure



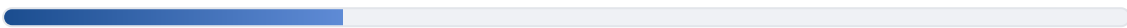
73.3 / 100

Contrast



83.6 / 100

Framing



30.0 / 100

Background



100.0 / 100

Fashion Fit



80.0 / 100

Grooming



81.7 / 100

### Wardrobe Separation



78.9 / 100

### Pose Variety

Score: 66.7 / 100

Missing types: full\_body

### Fashion Fit & Posture

Fashion fit score: 79 / 100

Posture score: 49 / 100

Average subject coverage: 45.8%

Images with limb cutoff risk: 1

### Styling & Grooming

Grooming score: 81 / 100

Hair/face occlusion control: 82 / 100

Face shine control: 80 / 100

Wardrobe/background separation: 78 / 100

### Face & Expression

Eye openness score: 100 / 100

Expression balance: 0 / 100

Face angle stability: 36 / 100

### Category Fit

Editorial (Best Fit)



68.4 / 100

Ecommerce

64.9 / 100

Beauty

62.8 / 100

Commercial

59.8 / 100

## Lighting & Cohesion

Lighting quality: 95 / 100

Background edge density: 0.7%

Palette consistency: 13 / 100

Hue variance: 70.5 deg

Temperature variance: 0.220

Cohesion score: 23 / 100

Lighting, background, or palette varies across the set.

Dominant style: Beauty

## Coach Feedback

- Center the subject and keep consistent headroom.
- Increase sharpness by using steady camera and good light.
- Relax shoulders and lengthen the torso to create cleaner body geometry.
- Keep wrists and ankles fully inside the frame to protect silhouette continuity.
- Keep palette and white balance more consistent across the set for stronger cohesion.

Next step: Relax shoulders and lengthen the torso to create cleaner body geometry.

AI source: fallback

## What to Keep

- Keep lighting soft and even across the face.
- Maintain simple styling and clean backgrounds.

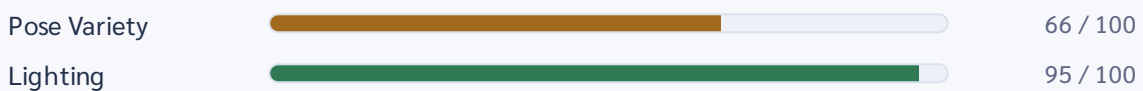
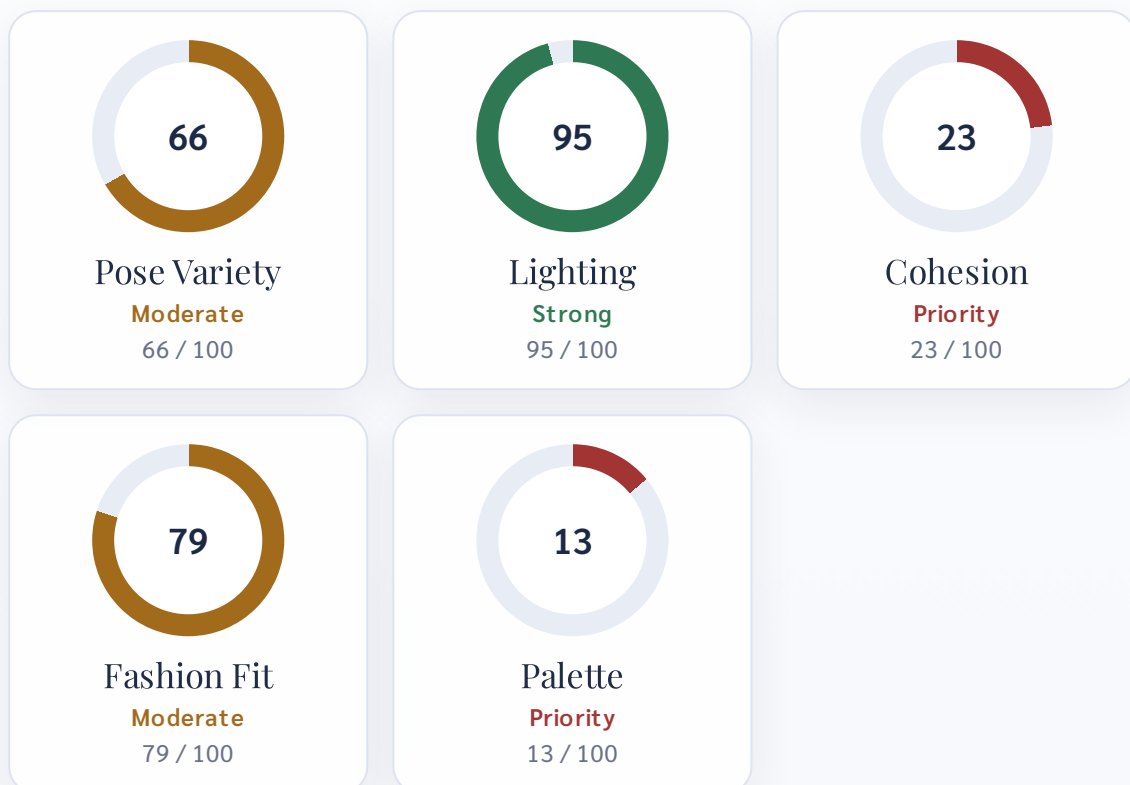
- Keep expression natural and camera-aware.

## Reshoot Checklist

- Keep consistent headroom and avoid cutting off hands or feet
- Use a steady surface or tripod to reduce blur
- Stick to solid colors to highlight your proportions
- Keep hair neat and away from the face to maintain sharpness
- Use natural makeup with matte finishes to reduce shine

## How To Read Your Metrics

Use this dashboard as your decision map: high values show what is production-ready, while lower values show what to improve first. Start with the three lowest metrics and retest after your next shoot set.





Cohesion	<div><div></div></div>	23 / 100
Fashion Fit	<div><div></div></div>	79 / 100
Palette	<div><div></div></div>	13 / 100

### Priority Order For Next Shoot

- Palette: 13 / 100
- Cohesion: 23 / 100
- Pose Variety: 66 / 100

### Pose Variety

**What it means:** Measures range of framing types and visual variation across the set.

**How to improve:** Add headshot, three-quarter, and full-body with clearly different body lines.

### Lighting

**What it means:** Measures highlight/shadow balance and face readability.

**How to improve:** Use soft front-side light and keep exposure consistent across frames.

### Cohesion

**What it means:** Measures how consistent your set feels in light, background, and color.

**How to improve:** Keep location, white balance, and setup similar when shooting the sequence.

### Fashion Fit

**What it means:** Measures silhouette strength, posture quality, and framing of body lines.

**How to improve:** Lengthen posture, keep line clean, and avoid cramped composition.

### Palette

**What it means:** Measures color harmony and tone consistency across photos.

**How to improve:** Use coordinated wardrobe tones and stable color temperature.

Automated audit only. No guarantee of selection.