

B. Photo Readiness Report

Generated: 2026-02-11T22:05:36Z

199.5

/ 300 total

Needs improvements

Confidence: 85 (High)

Pose Variety: 66.7 / 100

Lighting: 71 / 100

Cohesion: 48 / 100

Scouting Agent Report

This series reads like a quiet fashion narrative, The set plays as a confident casting story, There is a clean, modern arc running through these frames, with a editorial-leaning sensibility and styling restraint that keeps the focus on silhouette and expression, with a gentle escalation in attitude that feels styled and market-ready. The story threads through the set as follows: This three-quarter frame introduces a developmental mood with clean lines and a modern casting feel, then A three-quarter view leans into a developmental attitude, with shape and proportion reading clearly, then The camera finds a three-quarter angle that carries a developmental polish with a deliberate silhouette and camera-aware energy, then In this three-quarter composition introduces a developmental mood with clean lines and a modern casting feel, then This three-quarter portrait leans into a developmental attitude, with shape and proportion reading clearly, then A full body framing carries a developmental polish with a deliberate silhouette and camera-aware energy, then This full body frame introduces a developmental mood with clean lines and a modern casting feel, then A three-quarter view leans into a developmental attitude, with shape and proportion reading clearly, then The camera finds a three-quarter angle that carries a developmental polish with a deliberate silhouette and camera-aware energy. It lands as a sellable capsule with a clear point of view and a professional, agency-ready energy.

All Photos



Score 68.9

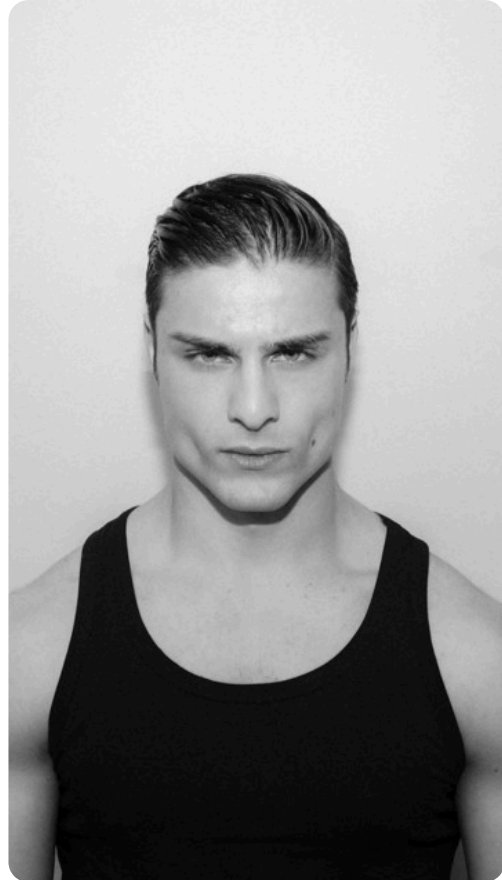
Confidence 82 (High)

Good candidate for your top selection.

Style Fashion (0.90)

The camera finds a three-quarter angle that carries a developmental polish with a deliberate silhouette and camera-aware energy. Light reads soft but could be refined to sculpt the face with more precision and clarity. The presence is promising, though a steadier gaze and posture would elevate the frame. It complements the surrounding frames by lifting the energy from the previous image, keeping the set cohesive.

Nudity 5.4%



Score 66.0

Confidence 89 (High)

Good candidate for your top selection.

Style Fashion (0.80)

A three-quarter view leans into a developmental attitude, with shape and proportion reading clearly. Light falls cleanly across the face, keeping skin tone luminous without flattening structure. There is a composed, camera-aware presence that feels bookable and on-brief. It connects to the sequence by maintaining the same visual cadence, adding dimension to the overall story.

Nudity 0.0%



Score 64.6

Confidence 94 (High)

Good candidate for your top selection.

Style Fashion (0.85)

This three-quarter portrait leans into a developmental attitude, with shape and proportion reading clearly. Light falls cleanly across the face, keeping skin tone luminous without flattening structure. There is a composed, camera-aware presence that feels bookable and on-brief. It connects to the sequence by lifting the energy from the previous image, adding dimension to the overall story.

Nudity 15.7%



Score 63.2

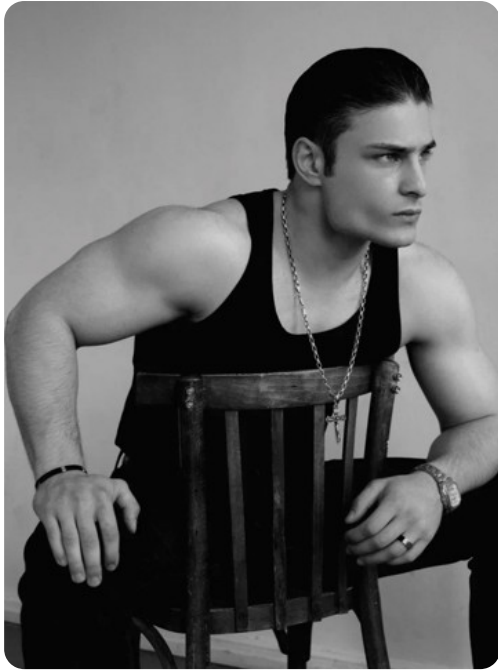
Confidence 96 (High)

Good clarity; the image reads clean and usable. Lift exposure slightly to open the shadows and keep facial detail clean.

Style Fashion (0.80)

This full body frame introduces a developmental mood with clean lines and a modern casting feel. Light falls cleanly across the face, keeping skin tone luminous without flattening structure. There is a composed, camera-aware presence that feels bookable and on-brief. Compared with the previous frame, this one reads more elevated and sharpens the narrative of the set.

Nudity 34.5%



Score 55.6

Confidence 90 (High)

Background stays clean, keeping attention on the face and line. Sharpness drops—use steadier support and lock focus on the eyes.

Style Fashion (0.85)

A full body framing carries a developmental polish with a deliberate silhouette and camera-aware energy. Light falls cleanly across the face, keeping skin tone luminous without flattening structure. There is a composed, camera-aware presence that feels bookable and on-brief. It complements the surrounding frames by softening the energy after the previous image, keeping the set cohesive.

Nudity 0.0%



Score 53.5

Confidence 77 (High)

Good clarity; the image reads clean and usable. Lift exposure slightly to open the shadows and keep facial detail clean.

Style Editorial (0.80)

A three-quarter view leans into a developmental attitude, with shape and proportion reading clearly. Light reads soft but could be refined to sculpt the face with more precision and clarity. The presence is promising, though a steadier gaze and posture would elevate the frame. It connects to the sequence by lifting the energy from the previous image, adding dimension to the overall story.

Nudity 0.0%



Score 51.1

Confidence 87 (High)

Background stays clean, keeping attention on the face and line. Sharpness drops—use steadier support and lock focus on the eyes.

Style Fashion (0.85)

In this three-quarter composition introduces a developmental mood with clean lines and a modern casting feel. Light falls cleanly across the face, keeping skin tone luminous without flattening structure. There is a composed, camera-aware presence that feels bookable and on-brief. Compared with the previous frame, this one reads more relaxed and sharpens the narrative of the set.

Nudity 5.1%



Score 28.6

Confidence 75 (High)

Centered composition keeps the silhouette balanced and confident. Sharpness drops—use steadier support and lock focus on the eyes.

Style Sensual (0.75)

This three-quarter frame introduces a developmental mood with clean lines and a modern casting feel. Light reads soft but could be refined to sculpt the face with more precision and clarity. The presence is promising, though a steadier gaze and posture would elevate the frame. Compared with the previous frame, this one reads as the opening statement and sharpens the narrative of the set.

Nudity 12.5%



Score 24.0

Confidence 76 (High)

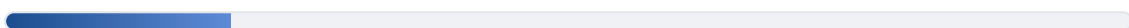
Background stays clean, keeping attention on the face and line. Sharpness drops—use steadier support and lock focus on the eyes.

The camera finds a three-quarter angle that carries a developmental polish with a deliberate silhouette and camera-aware energy. Light reads soft but could be refined to sculpt the face with more precision and clarity. The presence is promising, though a steadier gaze and posture would elevate the frame. It complements the surrounding frames by softening the energy after the previous image, keeping the set cohesive.

Nudity 8.7%

Score Breakdown

Sharpness



19.9 / 100

Exposure



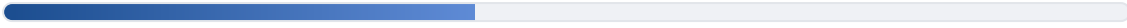
54.2 / 100

Contrast



76.9 / 100

Framing



41.9 / 100

Background



100.0 / 100

Pose Variety

Score: 66.7 / 100

Missing types: headshot

Face & Expression

Eye openness score: 93 / 100

Expression balance: 0 / 100

Face angle stability: 44 / 100

Category Fit

Editorial (Best Fit)



62.2 / 100

Ecommerce



56.8 / 100

Beauty



51.2 / 100

Commercial



50.9 / 100

Lighting & Cohesion

Lighting quality: 71 / 100

Background edge density: 0.2%

Cohesion score: 48 / 100

Lighting/background varies across the set.

Dominant style: Fashion

Coach Feedback

- Increase sharpness by using steady camera and good light.
- Center the subject and keep consistent headroom.
- Avoid overexposed highlights and deep shadows.

Next step: Retake 3-5 photos following the checklist.

AI source: fallback

What to Keep

- Keep lighting soft and even across the face.
- Maintain simple styling and clean backgrounds.

Reshoot Checklist

- Avoid direct overhead light; keep the light source in front of you
- Keep consistent headroom and avoid cutting off hands or feet
- Tap to focus on the eyes before taking the shot
- Keep hair neat and away from the face to maintain sharpness
- Stick to solid colors to highlight your proportions

Automated audit only. No guarantee of selection.