

B. Photo Readiness Report

Generated: 2026-05-29T09:32:20Z

216.2

/ 300 total

Agency-ready

Confidence: 93 (High)

Pose Variety: 66.7 / 100

Lighting: 100 / 100

Cohesion: 46 / 100

Fashion Fit: 88 / 100

Palette: 70 / 100

Cinematic Story Strip

The sequence moves from fashion energy toward a wardrobe separation-led finish, creating a coherent casting narrative.



Look 01

Fashion | Score 73.1

Best trait: Wardrobe Separation



Look 02

Beauty | Score 72.3

Best trait: Grooming



Look 03

Beauty | Score 70.8

Best trait: Wardrobe Separation

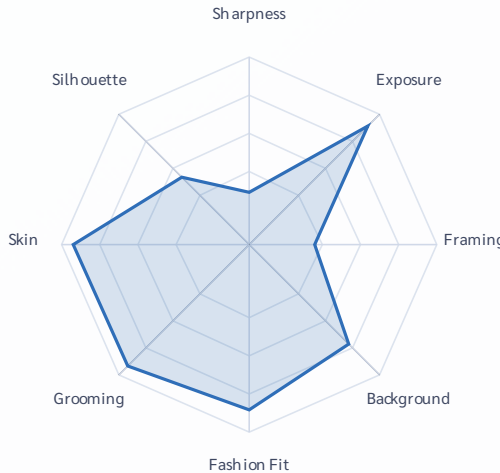


Look 04

Fashion | Score 70.8

Best trait: Wardrobe Separation

Visual Snapshot



1 Capture Quality



2 Styling & Grooming



3 Silhouette & Line



4 Cohesion & Palette



5 Final Readiness



Pose Elongation Priority
25 / 100
 Adjust camera height and stance for longer body geometry.
 Estimated gain if improved: +24 pts

Cohesion Priority
46 / 100
 Standardize setup and lighting to reduce set-to-set drift.
 Estimated gain if improved: +20 pts

Silhouette Line Priority
50 / 100
 Refine body angles and garment structure for cleaner line.
 Estimated gain if improved: +18 pts

Scouting Agent Report

This series reads like a quiet fashion narrative, The set plays as a confident casting story, There is a clean, modern arc running through these frames, with a editorial-leaning sensibility and styling restraint that keeps the focus on silhouette and expression, moving from a composed first impression into a more assured, camera-aware presence. The story threads through the set as follows: This three-quarter frame introduces a developmental mood with clean lines and a modern casting feel, then A full body view leans into a developmental attitude, with shape and proportion reading clearly, then The camera finds a three-quarter angle that carries a developmental polish with a deliberate silhouette and camera-aware energy, then In this three-quarter composition introduces a developmental mood with clean lines and a modern casting feel. It lands as a sellable capsule with a clear point of view and a professional, agency-ready energy.

All Photos



Score 73.1

Confidence 100 (High)

Fashion fit 89.3 / 100

Subject coverage 34.5%

Posture 57.1 / 100

Limb cutoffs 0 point(s)

Grooming 87.8 / 100

Shine control 99.3 / 100

Wardrobe/background separation 100.0 / 100

Skin readiness 96.1 / 100

Makeup finish 95.7 / 100

Silhouette line 48.5 / 100

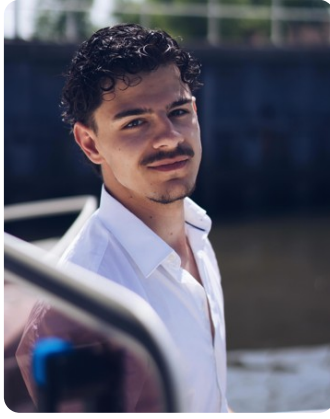
Pose elongation 40.5 / 100

Good candidate for your top selection.

Style Fashion (0.80) | Commercial (0.60)

A full body view leans into a developmental attitude, with shape and proportion reading clearly. Light falls cleanly across the face, keeping skin tone luminous without flattening structure. There is a composed, camera-aware presence that feels bookable and on-brief. It connects to the sequence by lifting the energy from the previous image, adding dimension to the overall story.

Nudity 10.8%



Score 72.3

Confidence 94 (High)

Fashion fit 82.7 / 100

Subject coverage 46.0%

Posture 65.0 / 100

Limb cutoffs 0 point(s)

Grooming 100.0 / 100

Shine control 100.0 / 100

Wardrobe/background separation 100.0 / 100

Skin readiness 96.9 / 100

Makeup finish 98.6 / 100

Silhouette line 53.9 / 100

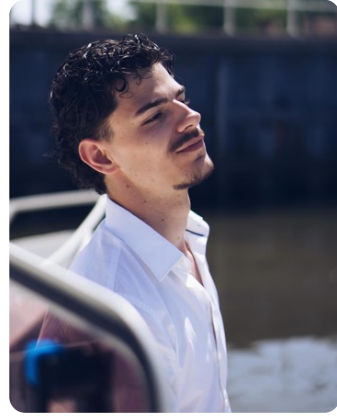
Pose elongation 19.3 / 100

Good candidate for your top selection.

Style Beauty (0.80) | Fashion (0.60)

The camera finds a three-quarter angle that carries a developmental polish with a deliberate silhouette and camera-aware energy. Light falls cleanly across the face, keeping skin tone luminous without flattening structure. There is a composed, camera-aware presence that feels bookable and on-brief. It complements the surrounding frames by maintaining the same visual cadence, keeping the set cohesive.

Nudity 18.9%



Score 70.8

Confidence 92 (High)

Fashion fit 96.5 / 100

Subject coverage 44.2%

Posture 94.5 / 100

Limb cutoffs 0 point(s)

Grooming 88.5 / 100

Shine control 100.0 / 100

Wardrobe/background separation 100.0 / 100

Skin readiness 90.6 / 100

Makeup finish 95.0 / 100

Silhouette line 54.0 / 100

Pose elongation 23.7 / 100

Good candidate for your top selection.

Style Beauty (0.80) | Fashion (0.70)

In this three-quarter composition introduces a developmental mood with clean lines and a modern casting feel. Light falls cleanly across the face, keeping skin tone luminous without flattening structure. There is a composed, camera-aware presence that feels bookable and on-brief. Compared with the previous frame, this one reads consistent and sharpens the narrative of the set.

Nudity 20.1%



Score 62.8

Confidence 86 (High)

Fashion fit 84.0 / 100

Subject coverage 55.0%

Posture 54.2 / 100

Limb cutoffs 0 point(s)

Grooming 89.8 / 100

Shine control 79.6 / 100

Wardrobe/background separation
100.0 / 100

Skin readiness 91.5 / 100

Makeup finish 85.0 / 100

Silhouette line 46.9 / 100

Pose elongation 16.5 / 100

Centered composition keeps the silhouette balanced and confident. Sharpness drops—use steadier support and lock focus on the eyes.

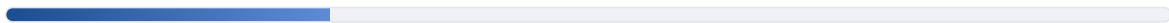
Style Fashion (0.80) | Commercial (0.60)

This three-quarter frame introduces a developmental mood with clean lines and a modern casting feel. Light falls cleanly across the face, keeping skin tone luminous without flattening structure. There is a composed, camera-aware presence that feels bookable and on-brief. Compared with the previous frame, this one reads as the opening statement and sharpens the narrative of the set.

Nudity 30.7%

Score Breakdown

Sharpness



27.8 / 100

Exposure



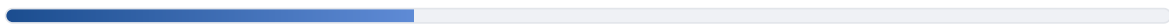
89.4 / 100

Contrast



100.0 / 100

Framing



35.0 / 100

Background



75.0 / 100

Fashion Fit



88.1 / 100

Grooming



91.5 / 100

Wardrobe Separation



100.0 / 100

Skin Readiness



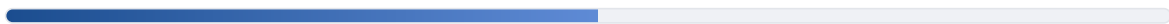
93.8 / 100

Makeup Finish



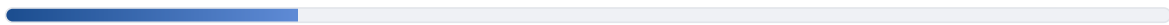
93.6 / 100

Silhouette Line



50.8 / 100

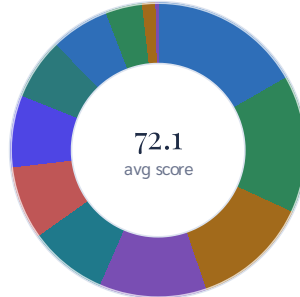
Pose Elongation



25.0 / 100

Score Composition

Weighted contribution of each metric to overall readiness.



● Exposure	89.4	16.7%
● Fashion Fit	88.1	15.2%
● Contrast	100.0	12.9%
● Background	75.0	11.8%
● Wardrobe Separation	100.0	8.6%
● Framing	35.0	8.0%
● Grooming	91.5	7.9%
● Skin Readiness	93.8	6.7%
● Sharpness	27.8	6.4%
● Makeup Finish	93.6	4.0%
● Silhouette Line	50.8	1.5%
● Pose Elongation	25.0	0.4%

Pose Variety

Score: 66.7 / 100
Missing types: headshot

Fashion Fit & Posture

Fashion fit score: 88 / 100
Posture score: 67 / 100
Average subject coverage: 44.9%
Images with limb cutoff risk: 0

Styling & Grooming

Grooming score: 91 / 100
Skin readiness: 93 / 100
Makeup finish: 93 / 100
Hair/face occlusion control: 88 / 100
Face shine control: 94 / 100
Wardrobe/background separation: 100 / 100

Silhouette & Line

Silhouette line score: 50 / 100
Pose elongation score: 25 / 100
Use these scores to tune posture and camera height for cleaner proportions.

Face & Expression

Eye openness score: 100 / 100
Expression balance: 5 / 100
Face angle stability: 24 / 100

Category Fit

Editorial (Best Fit)



72.1 / 100

Beauty



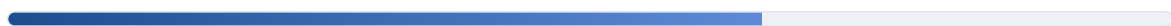
71.8 / 100

Ecommerce



68.4 / 100

Commercial



64.7 / 100

Editorial (Best Fit)

72.1

Lead +0.3

Beauty

71.8

Gap -0.3

Ecommerce

68.4

Gap -3.7

Commercial

64.7

Gap -7.4

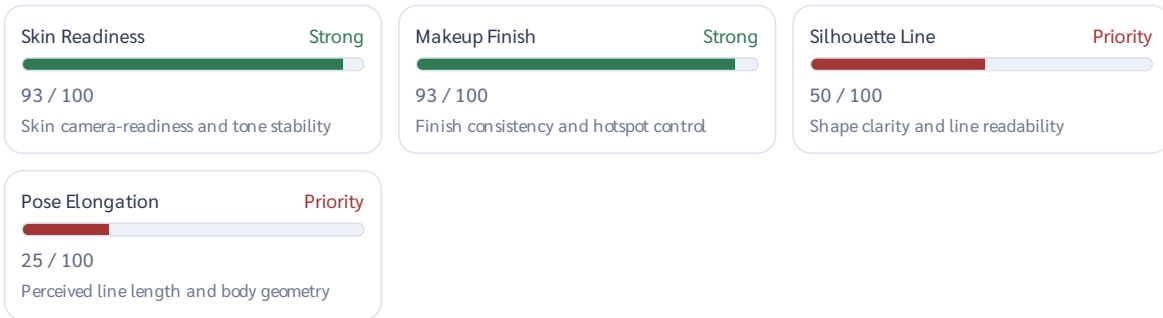
Per-Photo Heat Grid

Green = strong, amber = moderate, red = priority improvement.

Photo	Total	Fashion	Grooming	Skin	Silhouette	Elongation	Framing	Exposure
Photo 2	73	89	87	96	48	40	30	94
Photo 3	72	82	100	96	53	19	40	100
Photo 4	70	96	88	90	53	23	38	100
Photo 1	62	83	89	91	46	16	30	63

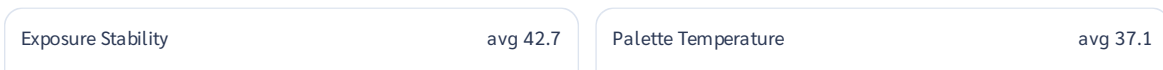
Skin, Makeup & Silhouette Dashboard

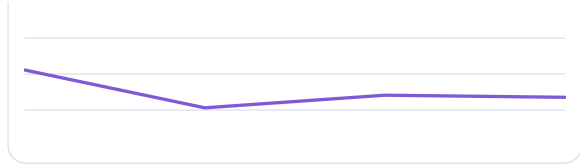
Focused presentation metrics to improve camera-readiness and line quality.



Cohesion Timeline

Frame-by-frame consistency view across exposure, palette temperature, and separation.





Subject Separation

avg 100.0

Lighting & Cohesion

Lighting quality: 100 / 100

Background edge density: 2.7%

Palette consistency: 70 / 100

Hue variance: 18.8 deg

Temperature variance: 0.048

Cohesion score: 46 / 100

Lighting, background, or palette varies across the set.

Dominant style: Fashion

Coach Feedback

- Use longer posture and camera angle adjustments to create a more elongated line.
- Increase sharpness by using steady camera and good light.
- Center the subject and keep consistent headroom.
- Refine silhouette line with stronger posture and clearer garment shape.
- Clarify silhouette lines with stronger pose structure and cleaner garment drape.

Next step: Clarify silhouette lines with stronger pose structure and cleaner garment drape.

AI source: fallback

What to Keep

- Makeup finish appears even and controlled, with clean presentation on camera.
- Wardrobe separates cleanly from background, keeping shape readable.

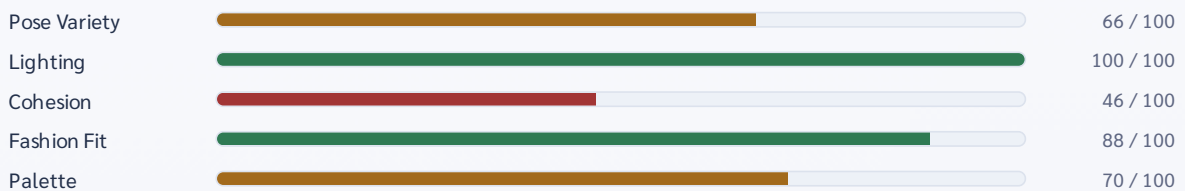
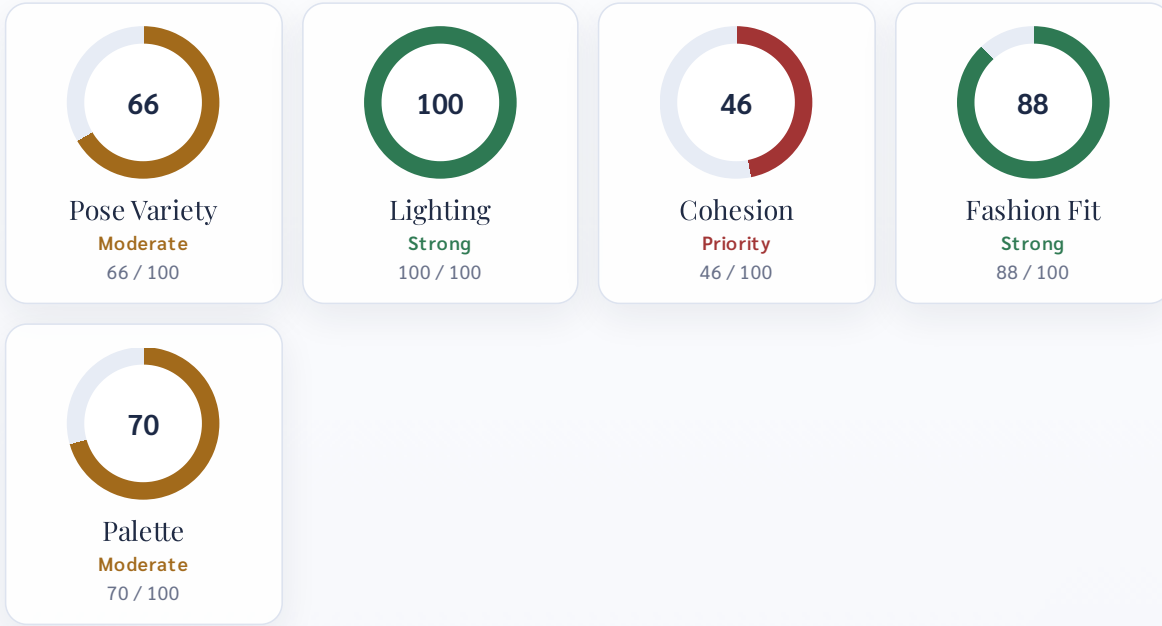
Reshoot Checklist

- Keep consistent headroom and avoid cutting off hands or feet
- Tap to focus on the eyes before taking the shot
- Stick to solid colors to highlight your proportions
- Avoid collapsing the torso; keep neck long and silhouette open to camera

- Balance exposure on the face first so skin tone stays even across the frame

How To Read Your Metrics

Use this dashboard as your decision map: high values show what is production-ready, while lower values show what to improve first. Start with the three lowest metrics and retest after your next shoot set.



Priority Order For Next Shoot

- Cohesion: 46 / 100
- Pose Variety: 66 / 100
- Palette: 70 / 100

Pose Variety

What it means: Measures range of framing types and visual variation across the set.

How to improve: Add headshot, three-quarter, and full-body with clearly different body lines.

Lighting

What it means: Measures highlight/shadow balance and face readability.

How to improve: Use soft front-side light and keep exposure consistent across frames.

Cohesion

What it means: Measures how consistent your set feels in light, background, and color.

How to improve: Keep location, white balance, and setup similar when shooting the sequence.

Fashion Fit

What it means: Measures silhouette strength, posture quality, and framing of body lines.

Palette

What it means: Measures color harmony and tone consistency across photos.

How to improve: Lengthen posture, keep line clean, and avoid cramped composition.

How to improve: Use coordinated wardrobe tones and stable color temperature.

Automated audit only. No guarantee of selection.